



DocuPrint C2535 A

Colour Laser Printer

THE DOCUMENT COMPANY
FUJI XEROX



DocuPrint C2535 A

Colour Laser Printer

Consumables

Toner Cartridges	
Black (up to 3,000 pages)	CT200655
Cyan (up to 8,000 pages)	CT200656
Magenta (up to 8,000 pages)	CT200657
Yellow (up to 8,000 pages)	CT200658

Capacities for 5% coverage on A4 size paper

Additional Supplies

Drum Cartridge (up to 35,000 pages)	CT350394
Transfer roll cartridge (up to 35,000 pages)	CT350395

Accessories/Options

Internal Hard Disk (20GB)	EL300449
550 Sheet Feeder	EL300447
1100 Sheet Feeder (2 x 550 trays)	EL300448

Additional Memory

128MB Memory	E3300053
256MB Memory	E3300061
512MB Memory	EL300452



C2535 A

Configurations

Performance	
Print speed	35ppm black and 25ppm colour
Print speed duplex	20.4 images per minute black and 14.8 images per minute colour
First page out	under 16 secs colour or black
Warm up time	35 secs from power on
Memory (Std / Max)	128/640 MB RAM
Processor	400MHz CPU and ASIC co-processor
PDL (Page Description Language)	PCL6, Adobe PS3 (multi language E/KO/SC/TC)
Internal hard disk drive	20GB (optional)
Maximum duty cycle	Up to 90,000 pages/month
Print Quality	
Print resolution	600 x 600 dpi, 1200 x 1200 dpi at half speed*
Networking	
Network connectivity	Ethernet 10/100Base-TX, IEEE1284 parallel and USB 2.0
Paper Handling	
Automatic 2-sided printing	Standard
Paper input capability	550-Sheet Feeder , 150-Bypass Tray (Optional 550-Sheet Feeder; 1100-Sheet Feeder (550 2 trays))
Paper output capability	250-sheet standard tray face down
Productivity	
Standard features	Banner Sheet, Multiple-Up, Poster, Watermarks, Image Rotation, Booklet Creation, Zoom support
Warranty	One year on-site warranty

Specifications

Network/Software

Printer management CentreWare IS Embedded Web Server (EWS).

Font capabilities Standard Europe 81 fonts, PS 136 fonts.

Printer drivers Windows 98/Me, Windows NT 4.0, Windows 2000, Windows XP, Windows Server 2003, Mac OS 9.2.2*, Mac OS X 10.2.8, 10.3.6

Languages PCL 6, Adobe PS3.

Paper Handling

Media types Standard tray: plain, bond, recycled paper, heavy weight paper (up to 163gsm), coated paper (60-105gsm). Bypass tray: plain, bond, recycled paper, heavy weight paper (up to 216gsm), coated paper (up to 216gsm), transparencies, labels, envelopes, cards; Auto duplex printing: up to 163 gsm.

Media sizes Standard tray: A5, B5, A4, Letter, Legal 13, Legal 14, Executive From all trays. Monarch, Com 10, C5, DL and custom sizes (minimum size 149 x 210mm; maximum size 215.9 x 355.6mm), banner printing (210 x 900mm) from Bypass tray unit.

Special Features

Productivity tools Secure print*, Sample print*, Id Print, IP Filtering (IP address restriction, control panel restriction, Job log, Error Log).

Colour Controls

Print quality modes Standard, High Quality, High Resolution (1200dpi).

Colour correction modes Image auto correction (default), portrait, landscape, map.

Image types Normal, Photo, Presentation, Web pages, POP, sRGB.

Operating

Dimensions Width: 429mm, Height: 457mm, Depth: 631mm, Weight: 35Kg.

Environment Temperature: 5 to 32°C, Relative Humidity: 15 to 35%. Noise levels: Standby mode; 4 to 25db (A) Running mode; 6.3db (A) to 51db (A).

Electrical 220-240 VAC, (110 VAC Taiwan only) , 50/60Hz. Consumption: under 600 W running mode, under 30 W power save mode, under 7 W in sleep mode. ENERGY STAR qualified printer.

Customer Support

One-year on-site warranty, online web technical support and telephone support. Innovative service offerings include optional extended Service Agreements.

*1 When printing duplex at 1200 x 1200 dpi extra memory is required

*2 Requires 256 MB or more

*3 Extra memory or Hard Disk drive option is required

*4 Via USB - Post launch TCP/IP

Duplex
and network ready
with uncompromised
reliability &
performance



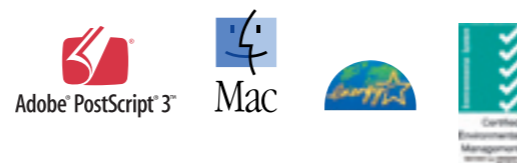
For more information or for your nearest authorised Fuji Xerox Printers reseller, visit our web site or call:

Australia 1300 7XEROX
New Zealand 0800 9XEROX

www.fxprinters.com

THE DOCUMENT COMPANY
FUJI XEROX

Fuji Xerox Printers
Thinking Printing



©2004 Fuji Xerox Printers. All rights reserved. Contents of this publication may not be reproduced without permission of Fuji Xerox Printers. Xerox, The Document Company, the stylised X, Phaser, CentreWare® and PhaserSmart® are registered trademarks/trademarks of Xerox Corporation. All other names mentioned are trademarks of their respective companies. The information in this brochure is subject to change without notice. Errors and omissions excepted. Fuji Xerox Printers practice a policy of continued product development, this means that product specifications may incorporate innovations and/or enhancements resulting from ongoing research & development (and may vary from those specified in brochures at time of printing). In keeping with normally accepted commercial practices, the purchaser is advised to both confirm product specifications, and satisfy themselves as to product performance and exact configuration (to suit each particular requirement) before purchase. Fuji Xerox Printers will not accept any liability (product related and/or resulting from product usage) where such due diligence has not been performed and the incorrect product has been purchased. FXP0376_DPC2535 A_02/05

Fuji Xerox Printers

DocuPrint C2535 A

A4 Colour Laser Printer

Increase your office productivity with a faster printing speed and enjoy higher quality print in colour or black and white.

Uncompromised reliability and performance

The DocuPrint C2535A has an amazing fast speed of 35ppm in black and white and 25ppm in colour. It features a single pass Fuji Xerox engine with newly developed Intelligent Imaging and unique multi-level acceleration technology that enables high speed printing. This means that documents including fine text, graphics and photographs can be printed at optimum quality without compromising performance.

Shorter warm-up time

Through combining the Fuji Xerox unique energy-saving 'Free Belt Nip Fuser' and a newly developed '4-2-1 tandem engine', image quality adjustment and fuser preheating can take place concurrently at startup. In addition, four colours of density control patterns are written at high speed and then read together, enabling a short warm-up time from power-on or sleep mode of less than 35 seconds.

Multi-client / Multi-protocol right out of the box

The DocuPrint C2535A comes complete with PCL6 and Adobe PostScript 3 so operating systems such as Microsoft Windows or Apple Macintosh can share the printer. With integrated Ethernet 10/100Base-TX as standard, it can be connected out of the box to your network.

Faster data processing

The DocuPrint C2535A comes with a 400MHz RM5231 CPU and uses a high 32 bits/66 MHz PCI bus, with an ASIC imaging processor, allowing a large volume of data processing. With 128MB of standard memory and a maximum of 640MB RAM, it can spool large amounts of print data.

Simplified paper path and flexible paper handling

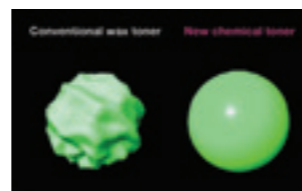
The DocuPrint C2535A has a simple 'C' type paper path that ensures less paper jams with all media types. This design allows the printer to feed up to 216gsm card stock with a reduced jam rate of 1/3000 from MPF and 1/5000 from paper cassette. This technology ensures uncompromised reliability with less operator interventions and longer engine life.

True 1200dpi resolution and multi-level resolution of 600dpi

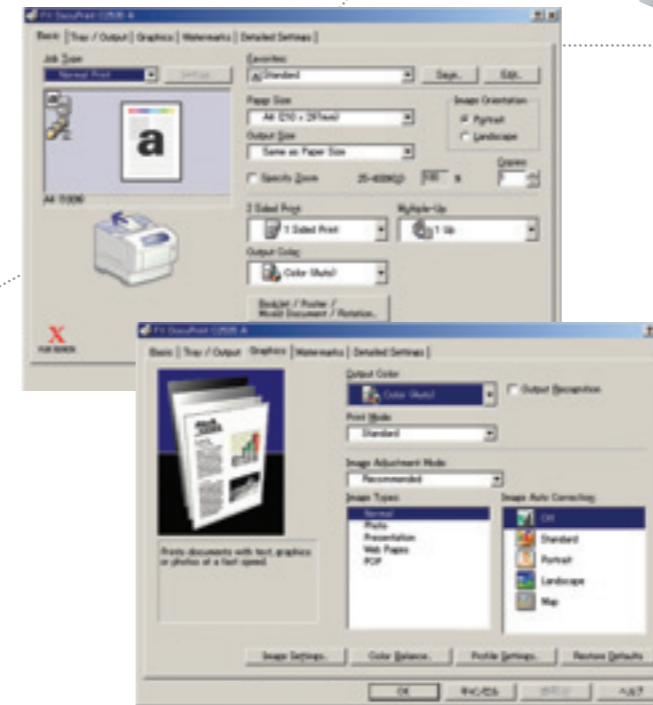
The DocuPrint C2535A is perfect for high-speed printing of photo's and line drawings with the option of three print modes. The Standard Mode produces perfect and clear documents in mono or colour and the High Quality Mode produces multi-level prints with excellent gradation at a resolution of 9600dpi x 600dpi. To print at optimum quality, the High Resolution Mode will deliver sharp definition prints at half speed with a resolution of 1200dpi x 1200dpi in PCL6. The selection for PostScript 3 is high speed.

New SPSS toner that delivers high quality prints for all media

The oil-free SPSS (Suspension of Polymer Solution Solvent)* toner enhances the clarity of black and white characters in office documents and provides vivid and natural colour imaging. You can also annotate printed documents with a ballpoint pen, apply a stamp, or stick on a Post-it note. The DocuPrint C2535A also allows high-quality prints to be made on recycled paper. Thus, versatility of media selection in the office is expanded.



Colour setup is simple and automatic, yet the DocuPrint C2535A colour laser printer is flexible enough to allow you to fine-tune output to your custom specifications.



Unique and innovative features for all your office printing needs.

Performance, print quality, uncompromised reliability and ease of use are just a few benefits offered by the DocuPrint C2535A. This extraordinary colour printer also comes with a host of innovative and useful features such as long format printing for banners (up to 900mm), E-mail, secure and sample printing so that you can enjoy improved efficiency and higher versatility.

Secure and sample print from memory or Hard disk Drive features†

The DocuPrint C2535A allows you to send confidential jobs as a secure job that can only be printed by a 4 digit password that you must enter in the machine front panel. The 4 digits must correspond to the 4 digits that you inputted into the driver at the time that you submitted the job.

Sample print lets you check the output before a large quantity of documents are printed to save paper and time.

Print your own banner

The DocuPrint C2535A provides the capability of printing your own banner of up to 297mm x 900mm. Various applications such as PowerPoint and Excel can be used to create visually appealing banners or point-of-purchase materials. The DocuPrint C2535A helps you achieve considerable savings in time and money when completing all your own in-house printing requirements.

† Requires 256MB or more memory

DocuPrint C2535 A

Colour Laser Printer

Lower cost for all-round affordability

The DocuPrint C2535A sets new standards in performance and all-round affordability. Its advanced technology means lower maintenance costs, as well as substantial savings in power consumption, this means that you get to enjoy better performance with greater affordability and value.

Low power consumption

The newly developed power management device installed in the DocuPrint C2535A reduces power consumption to a level measured as the lowest in its class. This low energy design also conforms to the International Energy Star Programme. The warm-up time from power-on or sleep mode is also shortened to less than 35 seconds. Select the quick mode and the warm-up time is further cut to less than 25 seconds. So you save energy and reduce time-cost simultaneously.

Low running cost, service cost and capital cost.

With the use of SPSS* toner, over 95% of toner is transferred to the media which reduces toner consumption by as much as 20%. Since there is a higher transfer of toner to the media there is less machine contamination which reduces the number of service calls and increases the life of the printer. Therefore savings are not only achieved on service costs but also running and capital costs.

