



Configurations

Model	4400B	4400N
Print Speed	25 pages per minute (A4)	
First Page Out Time	11 seconds	
Processor	266 MHz RISC processor	
PDL	Adobe® PostScript® 3™, PCL 5e, PCL6 emulation	
Memory (Std/Max)	32/224 MB RAM	64/256 MB RAM
Print Resolution	600 x 600dpi	True 1200 x 1200dpi
Network Connectivity	Bi-directional parallel, USB	Bi-directional parallel, USB, 10/100Base-TX Ethernet
Automatic 2-sided Printing	Yes†	
Paper Input Capacity	up to 1,750 sheets	
Paper Output Capacity	500 sheets	
Monthly Duty Cycle	up to 150,000 pages	

Specifications

Network/Software	
Printer Management	Xerox CentreWare Printer Management for Microsoft, Novell and Unix, CentreWare IS Embedded Web Server, CentreWare Web Administrator, Xerox NDPS Gateway, Usage Analysis Tool (not available on non-networked mode)
Font Capabilities	39 Resident PS fonts and 81 PCL Additional 97 PS fonts with optional hard disk
Printer Drivers	Windows 95/98/Me, Windows NT 4.x, Windows 2000/XP, MacOS 8/9/X version 10.1, Novell NetWare 3.x/4.x/5.x/6.x, UNIX (Linux 5.2+, Sun OS 4.x, Sun Solaris 2.4+, DEC, HP/UX 11.x, IBM AIX 4.2+, SGI, SCO)
Languages	True Adobe PostScript 3, PCL 5e and PCL6 emulations with automatic sensing and switching
Paper Handling	
Media Input	550-sheet main tray, 100 sheet multi-purpose tray 550-sheet feeder†
Media Output	500 sheets 500-sheet Stacker with Offset†
Media Types	In all trays: 60 - 216gsm bond and heavy plain papers, cardstock, labels, and envelopes Automatic 2-sided printing: 60 - 105gsm bond Multi-Purpose Tray: papers up to 216gsm cardstock, labels and envelopes
Media Sizes	A/letter, legal, executive, statement, US folio, A4, A5, A6, B5 JIS, ISO B5, and custom (size range: 76 x 127mm to 216 x 356mm)

Special Features	
Enhanced PrintingScout	Instantly displays pop-up Help if attention is needed throughout print job
Phaser Installer	Automatically gets you printing in minutes
PhaserSMART	Troubleshoots problems via an automated Internet-based support system
Productivity Tools	Secure Print*, Proof Print*, Saved Print*, Edge-to-edge printing, Booklet Printing, Negative and mirror images, Scaling, Auto Fit, Watermarks, Custom size paper, Cover Pages, Collation Printing*, Remote Printing, Separation Pages, N-up printing, Load-while-run, PDF-direct Printing*, Saved Job Repository*, MailinX E-mail Alerts
Operating	
Dimensions / Weight	422 (W) X 439 (D) X 413 (H) mm / 25kg
Environmental	Temperature 5° to 35°C, Relative Humidity: 15% to 85% (noncondensing), Noise Level: 4.9 B(A) standby, 6.7 B(A) running (ISO 7779, DIN EN 27779)
Electrical	Sleep mode, Energy Star Compliant, two models: 110 - 127 VAC, 50/60 Hz; 220 - 240 VAC, 50/60 Hz Consumption (max): Printing: 525 Watts, Standby: 110 Watts, Power Saver: 20 Watts
Regulatory	FCC Part 15 Subpart B, UL listed to UL 1950, UL Certified to CSA—C22.2 No. 950-M95, FDA 21 CFR Sub J, CE Mark applicable to directives 73/23/EEC and 89/336/EEC, TUV -GS Mark, IEC 950 Second Edition (EN 60950, EN 55022)
Consumables	
Standard-Capacity (10k) Print Cartridge	113R00627
High-Capacity (15k) Print Cartridge	113R00628
Maintenance Kit (110V)	108R00497
Maintenance Kit (220V)	108R00498
Options	
Phaser 4400B to 4400N Upgrade Kit	098S04703
550-sheet Feeder (letter/legal)	097S02878
75-envelope Feeder	097S02879
Duplex Module	097S02880
500-sheet Stacker with Offset	097S02881
Hard Disk (20 GB)	097S02917
32 MB Phaser Memory	097S02923
64 MB Phaser Memory	097S02912
128 MB Phaser Memory	097S02913
16 MB Flash Memory	097S02914

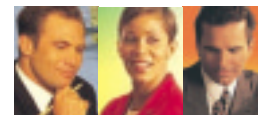
*Requires hard disk



For more information, please contact

FXAP PH400 B

Speeds Ahead of its Class



Big Printer Performance

Quality prints in less time is what the Phaser 4400 is all about. Get beautiful prints at maximum resolution without compromising print quality for speed.



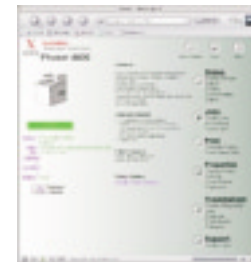
- 25ppm races through long or multiple-set print jobs.
- True 1200 x 1200dpi resolution at full engine speed for crisp text and beautifully detailed images exhibiting a wide range of tones.
- 266MHz RISC processor maintains engine speed when handling even large, complex applications.
- 11-second first-page-out time means your first print will be waiting in the tray for you.
- Peak volume printing is no problem with a maximum 150,000 monthly duty cycle.



Easy to Use for the Whole Office

The Phaser 4400 is a safe, dependable choice for worry-free printing. It is easy to use and manage for even the most inexperienced user. Plus, if the printer is getting low on paper or toner it can alert you before it runs out – keeping you working.

- The Xerox proactive Smart Driver senses your printing habits and automatically adjusts to save you time and effort.
- A full compliment of Xerox WorkSet features are included with your Phaser 4400, including job pipeling with compression, MailinX e-mail alerts, and Booklet printing. Plus you get Saved Print, Secure Print, Proof Print, and Direct PDF Printing with a hard disk.
- Easily manage, configure, and diagnose the Phaser 4400 from your desktop using its CentreWare® Internet Services (IS) embedded Web server.



Better Printing for Less Money

With everything you get, the feature-packed Phaser 4400's reasonable price makes it an outstanding value. Its robust, dependable engineering, media flexibility, and print quality give busy offices everything they need in a network printer.

- The entry network model includes 550-sheet input tray, 64 MB of memory, true Adobe® PostScript® 3™, and a full-size standard-capacity print cartridge (not a starter cartridge).
- Decades of Xerox engineering of document handling devices is built into the paper pick and feed system on the Phaser 4400, making it extremely reliable and worry-free (approximately one jam for every 10,000 prints).
- Available high-yield print cartridges minimise printer interventions and save money.



Phaser 4400 Laser Printer

Flexible and Reliable Paper Handling

The Phaser 4400's reliable paper pick and feed system allows all types of media up to 216gsm cardstock to be fed through the standard tray, including envelopes. Custom sizes anywhere between 76 x 127mm to 216 x 356mm are also supported. Plus, Xerox's brilliant Smart Tray technology allows you to see on your screen the size of paper in the tray.

The optional 500-sheet stacker with offset both expands output capacity and separates print jobs for easy distribution.

Large output bin can hold up to 500 sheets.

Standard 100-sheet multi-purpose tray.

The standard 550-sheet paper tray allows you to add a full ream of paper before the tray is empty. Plus, the size of paper in the tray can be seen on your printer driver thanks to the Phaser 4400's auto size-sensing technology.

Up to two additional 550-sheet trays are available for a total input capacity of 1,750 sheets.



The Xerox Phaser 4400 brings quality, value, and efficiency to the office.

Today's fast-paced offices need a printer that can not only keep up with them, but also do it for less. The Phaser 4400 has what it takes to keep your office working — not the other way around. And it's so easy to install, use and maintain that you won't know how you ever worked without it.



Smart Printing for Great Work

When you connect a Phaser 4400 to your network, you can take advantage of Xerox CentreWare software. It provides quick and convenient access to a wealth of features, including printer and job status, in-depth accounting information, e-mail alerts, and simplified network administration.

Phaser Installer makes network installation a simple one-click process

Printer administrators will benefit from CentreWare® Web to manage all the printers on their network (including non-Xerox network printers) using a standard Web browser

Dynamic driver interface provides real-time printer status, automatically selects the correct tray, and detects office application settings.

Enhanced PrintingScout provides instant pop-up messages on your monitor if any roadblocks arise during your print job.

The smart Phaser 4400 can even troubleshoot on its own with PhaserSMART™, our unique Internet-based automated support system.