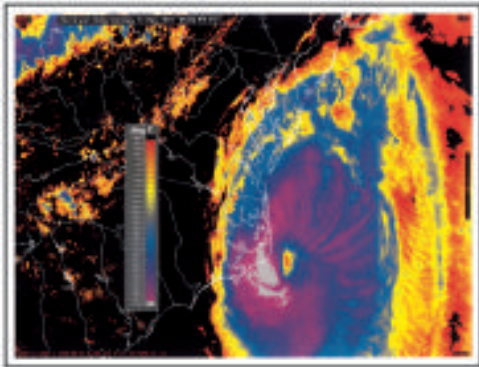


Phaser™ 440 Colour Printer

Everything You've Always
Wanted in a Photographic-
Quality Colour Printer



Courtesy Telonics, Inc. tiris™ system.



Get the big picture with the Phaser 440's oversized A4 colour prints. Get attention at your next presentation with photographic-quality overhead transparencies.

The Right Tool For The Job

Any way you look at it, the new Phaser 440 is the right A4, photographic-quality colour printer for the job. It's fast. It produces beautiful output. And it's built to take the demands of your workgroup in its stride. With the Phaser 440, you get everything you've always wanted in a photographic-quality colour printer — at a great price.

Make A Big Impression

Now you can have the generous, oversize image area you've always dreamed about, from an A4 colour printer. With the Phaser 440 you can print a full page with full bleeds. And for presentations, it's a powerful alternative to 35 mm slides: crisp, photographic-quality on your desktop — with all the convenience and flexibility of overheads.

Record-breaking Print Speed

Let's face it, printing time is often waiting time. Fortunately, the Phaser 440 is very productive. And it's very fast. You can print a full page — saturated in photorealistic colour — in just 2 minutes. And the Phaser 440

comes with 16 Mbytes of RAM (expandable to 64 Mbytes). The image processing takes place in the printer, instead of your computer, so you can move on to other tasks.

Built for Workgroup Productivity

Tektronix is a leading manufacturer of colour printers for workgroups. Sharing colour printers lowers the cost per user. And the Phaser 440 was designed to be shared. Its standard interfaces for Power Macs, Macs, PCs, and workstations are all simultaneously active, so you can download one job while another is printing. Ethernet options for EtherTalk, Novell NetWare, and TCP/IP are also available. And there's no problem supporting the demands of multiple users. The Phaser 440 features RISC-based processing with interleaved memory to ensure fast output. Plus, the optional Lower Tray Assembly gives your work group added flexibility. Users can choose to print on paper or transparencies, right from their computers. And the Phaser 440 features built-in Adobe™ PostScript™ Level 2 to ensure compatibility with every leading software application.

http://www.tek.com/Color_Printers/





Phaser™ 440 Colour Printer Specifications

Colour Printing Technology Continuous-tone 300 dpi dye sublimation colour printing with TekColor Photofine™ image enhancement technology.

Colour Systems PANTONE solid colour simulations, CIE international colour standards, and support for ICM and Apple ColorSync colour management systems. TekColor™ Dynamic Correction for simulations of Euroscale, SWOP, Commercial, and SNAP presses.

Workgroup Connectivity Macintosh, Windows/DOS PCs, IBM OS/2, UNIX workstations (SUN, SGI, HP, IBM, and DEC ULTRIX), DEC VMS workstations, mainframes.

Memory 16 Mbytes standard, expandable up to 64 Mbytes.

Network Interfaces *Standard:* AppleTalk, parallel, RS-232 serial, SCSI port for external font disk. *Options:* Internal Ethernet interface with support for EtherTalk, Novell NetWare, and TCP/IP protocols; all ports are simultaneously active with automatic print queue management.

Image Processing PhaserPrint™ plug-in for Adobe Photoshop™ (Macintosh version) expedites image offload, supports colour correction, and allows image replication. Equipped with a 24-MHz AMD 29000 RISC processor with interleaved memory.

Language Genuine Adobe™ PostScript™ Level 2 .

Fonts 39 resident fonts; additional fonts may be downloaded in memory; built-in support for PostScript Type 1, Type 3, and TrueType™ fonts; SCSI port allows external hard-disk storage of additional fonts.

Cut-sheet Media
Input tray capacity: 50 sheets of paper or transparencies.

Media Size and Image Area	
Paper & Transparencies	Image Area
A4-size (210 x 297 mm)	204 x 283 mm
Letter-size (8.5 x 11 ins.)	8.3 x 10.5 ins.
Letter-Extra Paper	
(Accommodates a full page with a full bleed image)	
243 x 337 mm (9.6 x 13.3 ins.)	237 x 323 mm (9.3 x 12.7 ins.)

Transfer Rolls and Print Speeds (Full page paper print)	
Transfer Roll	
3-Colour (100 prints per roll)	1.9 minutes
4-Colour (100 prints per roll)	2.5 minutes
Black (200 prints per roll)	1.1 minutes

Warranty TekColor Care, our comprehensive support system, provides telephone technical support, an on-demand fax reference library, and a one-year warranty (return-to-depot in country of original purchase). For additional care, Tektronix offers extended service plans.

*Pantone Inc.'s check-standard trademark for colour reproduction and colour reproduction materials.

Ordering Information Phaser 440

Includes input tray adjustable for all media; power cord; media startup kit with Letter-size paper and a sample 3-Colour transfer roll; transfer roll tray; installation instructions; user manual; cleaning kit; and utilities and drivers on diskette with an instruction manual. Product order number 4685

Metric Media Startup Kit

Metric-standard media startup kit in place of U.S. Customary-standard. Order Option 01

Options

Lower Tray Assembly

Second input tray and assembly. This option allows you to conveniently switch between input trays from your computer. Order (A4) 4685FTA Option 01; (Letter) 4685FTA

Add 16 Mbytes of RAM

(Total 32 Mbytes) Required to print the maximum image area on Letter Extra-size paper and for printing with a 4-colour transfer roll. Order Option 16

Add 32 Mbytes of RAM

(Total 48 Mbytes) Accelerates processing of complex images (up to twice the speed of the standard configuration) and enhances downloading of multiple fonts. Order Option 32

Add 48 Mbytes of RAM

(Total of 64 Mbytes) Increases the size of input buffers to optimize image downloading and maximizes the memory available for use in the most demanding applications. Order Option 48

Novell, EtherTalk Ethernet

Internal Ethernet interface with support for Novell NetWare and EtherTalk protocols. Order Option P1

TCP/IP Ethernet

Adds TCP/IP protocol support to the Ethernet interface (requires Option P1). Order Option P2

WARRANTY PLUS™ Service

Installation and set-up. Order Option S0

Extended warranty programs with complete coverage of parts and labor:

One year of on-site service. Order Option S1

Two years of on-site service. Order Option S2

Three years of on-site service. Order Option S3

Argentina: (54) 1 805-2700; Australia: (02) 888-7066; België en Luxemburg: 02 725 96 10; Brazil: 55 11 543-1911; Canada: 416 747-5000; Caribbean: 407 692-9900; Chile: 562 235-1190; Danmark: 44 53 54 55; Deutschland: 0221 9477-0; E. Europe, Near East and Eire: +44 1628 403627; Egypt: 0261 9291; España: (1) 372 6012; France: 1 69 86 81 81; Gulf Region: 971 2 318 813; Hong Kong: 852 2585 6688; India: 80 226-5470; Indonesia: 62 21 520-1432; Israel: 3 645-8777; Italia: (02) 25086.499; Japan: 3-3448-4872; Korea: 82 (2) 528-5299; Kuwait: +965 2 436 045; Malaysia: (60) 3 293-9322 or (60) 3 293-6000; México: 52 5 564-6649 or 52 5 628-1000 or 52 8 333-6622; Nederland: (02503) 95555; New Zealand: 9 415-6928; Norge: 22 07 07 00; Österreich: +44 1628 403627; Pakistan: 92 21 455-5915; Philippines: (63) 2 890-0111; Puerto Rico: 809 792-5139; Saudi Arabia: 01 477 1650; Schweiz: 042 21 91 92; Singapore: (65) 356-3900 or (65) 469-8833 or 475-5200 or 278-8988 or 748-3668; S. Africa: 11 444-7716; Suomi: 90 4783 4220; Sverige: 08 629 65 01; S. Korea: (82) 2 538-9942; Taiwan: (886) 2 765-6362; Thailand: 66 2 308-2900; U.K.: 01628 403600; U.S.: 503 682-7377

